



StrideBio Overview

Corporate Presentation

May 2022



The next evolution
in gene therapy

Agenda

1. Company Overview

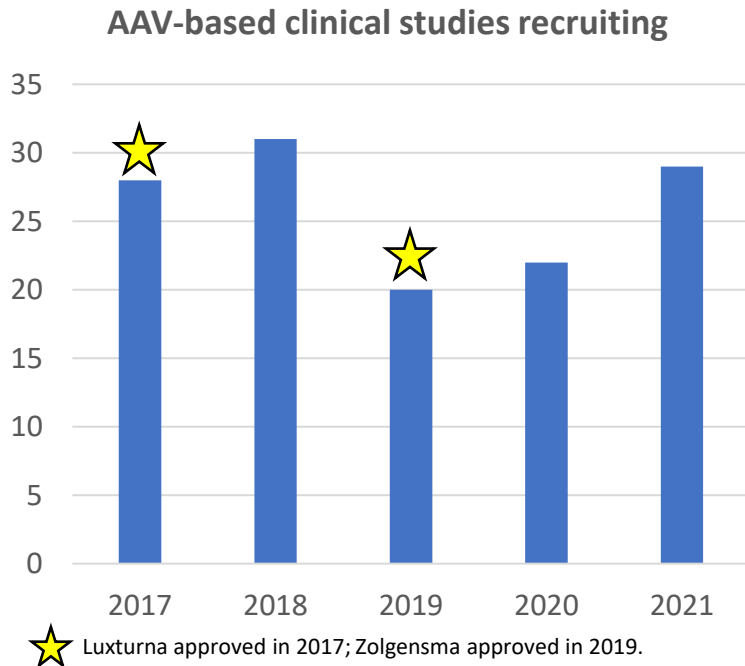
2. STRIVE™ Capsid Platform

3. AAV Manufacturing Capabilities

4. Therapeutic Pipeline

AAV Gene Therapy: Momentum with Recent Approvals but Tough Challenges Remain

Sustained Interest in Gene Therapies



Several Challenges Still to Overcome

- **Multiple clinical & non-clinical holds for AAV-based gene therapies**
- **Safety & Manufacturing as main drivers of failures**

➤ Serious adverse effects & liver toxicities



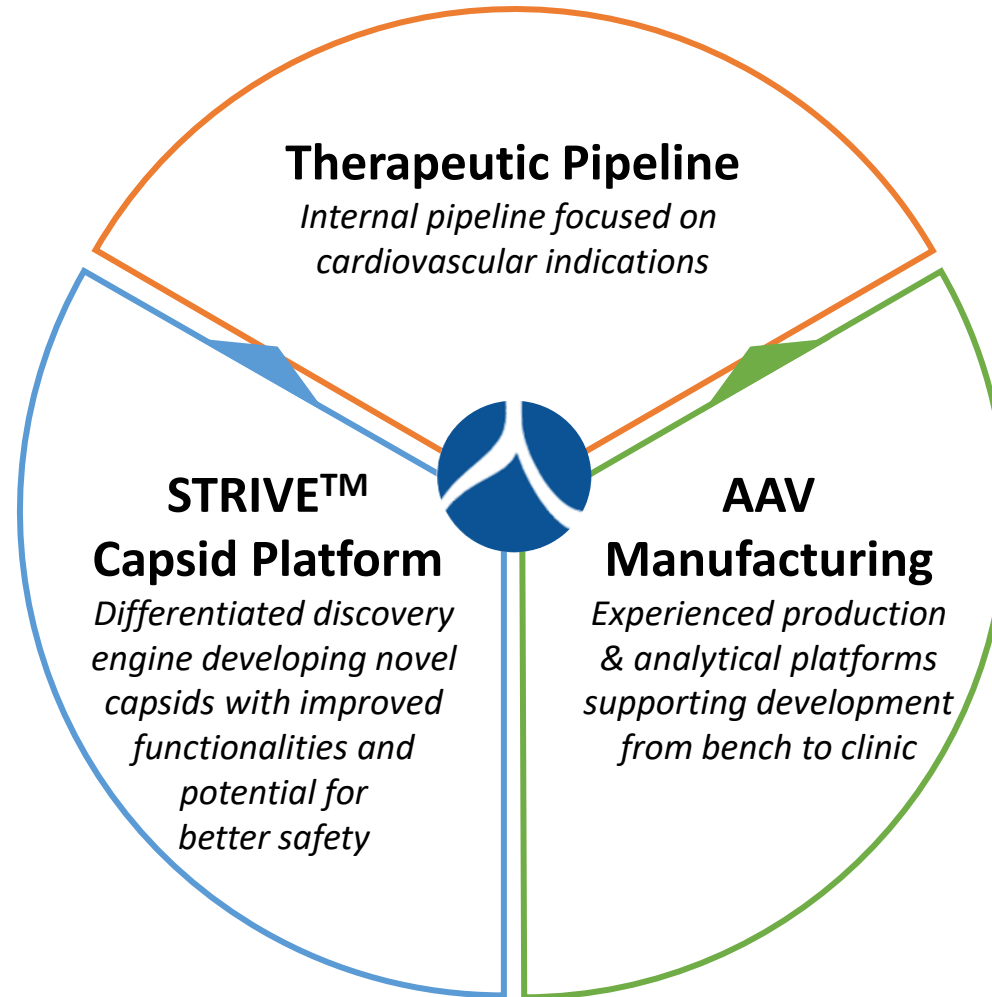
➤ Manufacturing and other CMC issues



Optimized capsids with better safety profiles & robust manufacturing platforms are key to AAV gene therapy success

Source: www.clinicaltrials.gov; searched for trials starting in each year with keywords "AAV or rAAV or adeno-associated."

StrideBio: Fully-integrated Company Leading the Next Evolution in Gene Therapy



StrideBio: STRIVE Platform & AAV Manufacturing as Key Enablers of our Therapeutic Pipeline

STRIVE Platform: differentiated discovery engine developing capsids with improved functionalities

- Utilizes 3D structure to iteratively mutate multiple epitopes to optimize capsids with improved functionalities and better safety profiles: enhanced tissue tropism, liver de-targeting, improved transduction & potency, cell type specificity, NAb evasion
- Leverages cross-species evolution to potentially de-risk clinical development
- Manufacturability-focused: early integration of core manufacturing elements (cells, reagents, bioprocessing steps)
- Large and expanding arsenal of capsids backed by robust IP estate

AAV Manufacturing: robust production & analytical platforms supporting development from bench to clinic

- Internalized, standardized and scalable manufacturing process using internally-developed mammalian cell line and optimized for efficient production of high-purity rAAV
- Comprehensive analytical capabilities: 16 assays in-house to support discovery, process, and therapeutics development
- End-to-end flexible and experienced production engine: >800 production runs executed, from 0.2L to 700L scale

Therapeutics Pipeline: internal pipeline focused on cardiovascular indications

- ARVC is lead therapeutic candidate; expect to submit IND in 2H23 and start Ph 1/2 trial in 1H24
- HCM (MYBPC3): discovery work ongoing with intent to identify therapeutic candidate by 1H23
- Partnered programs with Sarepta and Takeda focused on neuro

Agenda

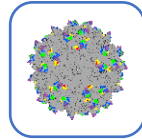
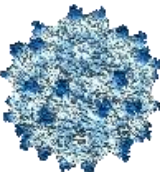
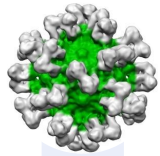
1. Company Overview

2. STRIVE™ Capsid Platform

3. AAV Manufacturing Capabilities

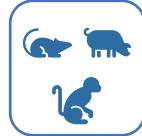
4. Therapeutic Pipeline

STRIVE Capsid Platform: A Differentiated Discovery Engine



3D Structure-guided Engineering

Multiple targeted functionality-relevant epitopes mutated iteratively based on 3D structure



Cross-species Evolution

Cross-species (pigs, mice, NHPs) evolved to potentially de-risk clinical development



Improved Functionalities

Properties multiplexed onto single capsids



Manufacturability

Early focus and early integration of core manufacturing elements

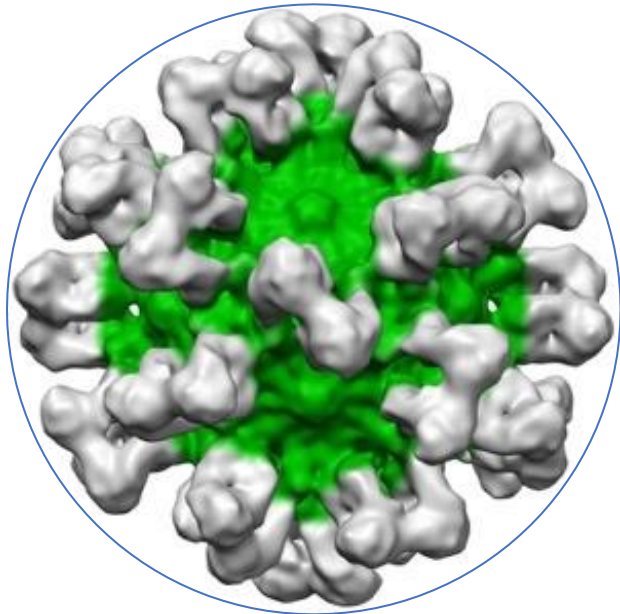


Capsid Arsenal Expansion

Enhanced library diversity to expand arsenal of evolved capsids

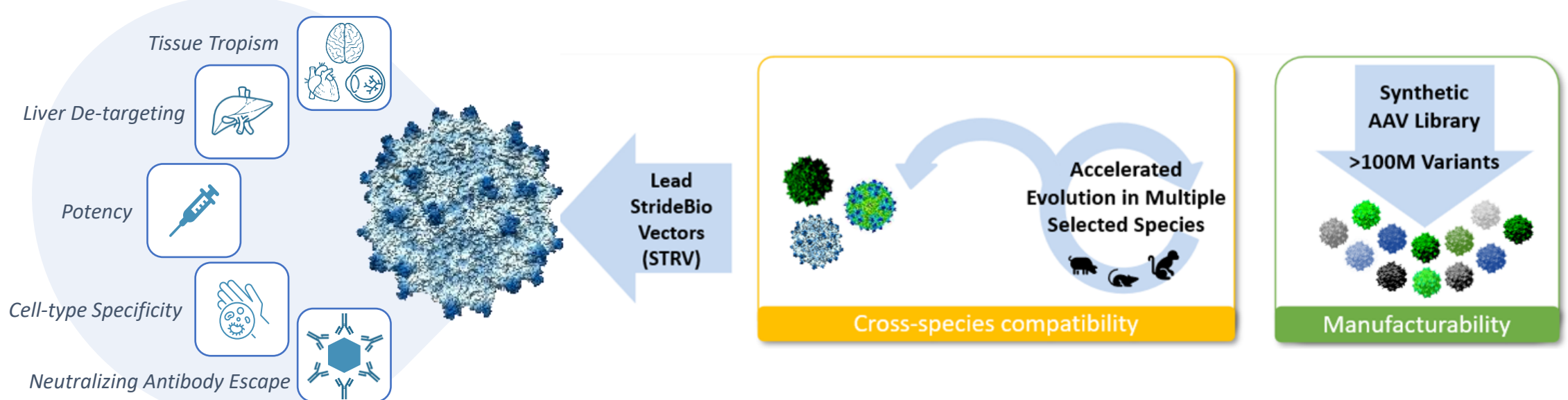
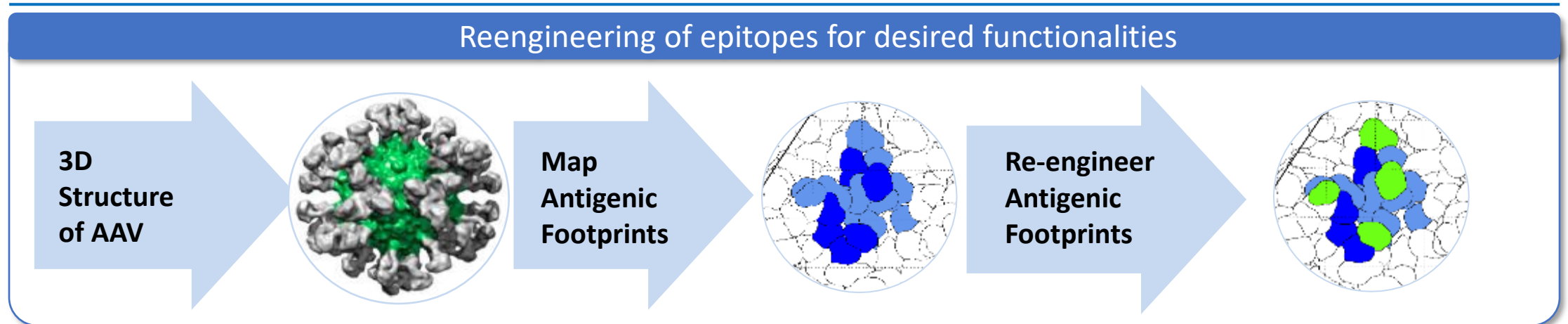
STRIVE Capsid Platform

Structure Inspired Vector Engineering (STRIVE) Platform





- Differentiated engineering approach driven by 3D structure to **optimize capsid functionalities**
- Versatile, iterative, cross-species platform to customize capsids for **improved safety profile**
- **Expanding capsid arsenal** and IP estate

STRIVE Capsid Platform: A Differentiated Discovery Engine

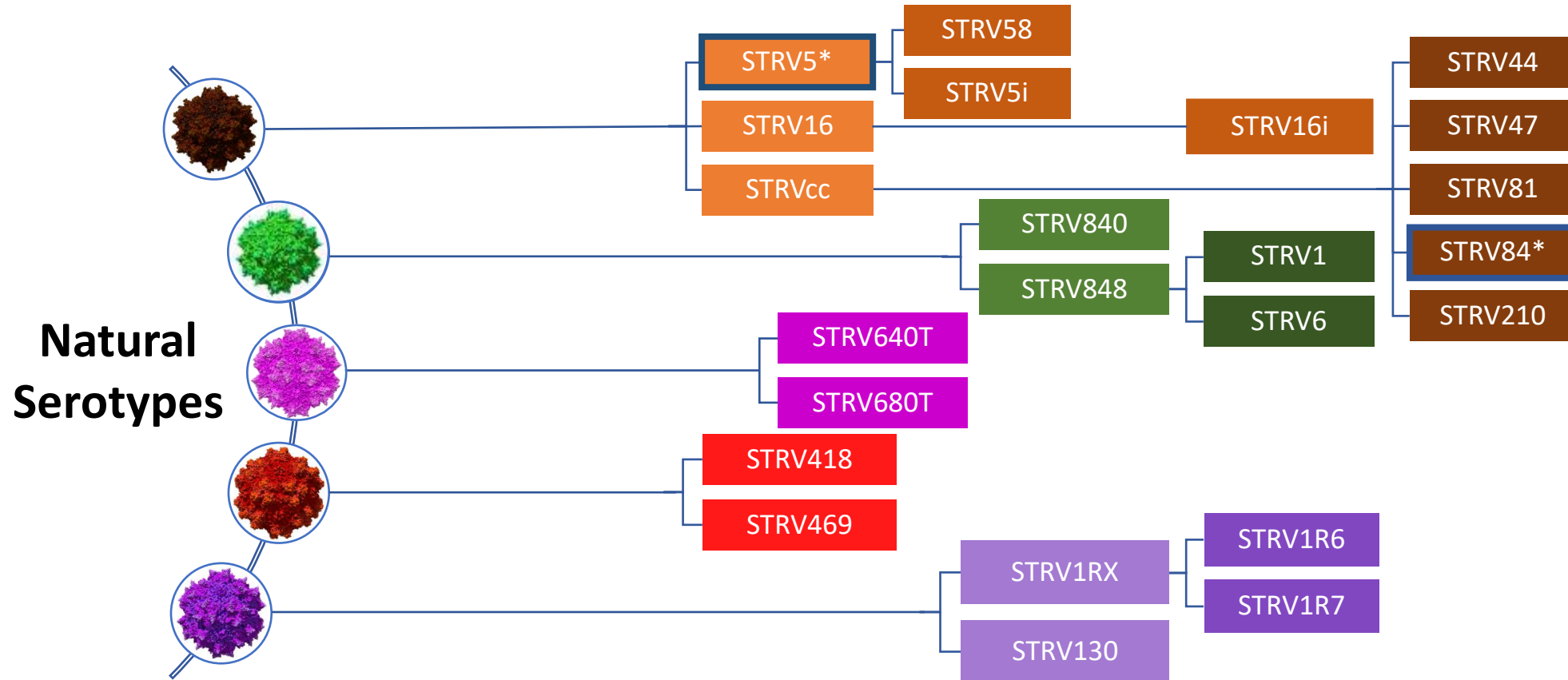


Differentiated Attributes Of STRIVE Capsid Platform

		<i>Selected Example Co.'s</i> 	
Engineering	Multiple targeted functionality-relevant epitopes iteratively mutated based on 3D structure (up to >5% modification)	<p>Peptide-insertion using 2D sequence, limiting modifications of overall capsid (<1% modification of entire capsid sequence)</p> <p>Point mutation, peptide insertion, DNA shuffling using 2D sequence; unable to further refine mutations</p>	
Evolution	Cross-species (pigs, mice, NHPs) evolved to potentially de-risk clinical development	Development is linear and when done in two animal species, done in parallel (i.e., not iterative across several species to optimize capsid); poses potential risk for clinical translation	
Capsid Functionalities	Multiplex properties onto single capsids: enhanced <u>tropism</u> , improved <u>transduction</u> & <u>potency</u> , better <u>safety profile</u>	Lower ability to multiplex properties onto single capsid; harder to optimize and customize capsids for specific functionalities	
Manufacturing Integration	Manufacturability is key initial gate for capsid development: early integration of core manufacturing elements	Manufacturing capabilities limited and most currently being built out; initial focus on small scale and not through clinical development; utilizes different cell lines through process	

Sources: Company websites, presentations, & filings.

Large and Expanding Arsenal of Capsids



Robust IP estate covering all novel capsids

* Capsid selected for therapeutic candidate

Agenda

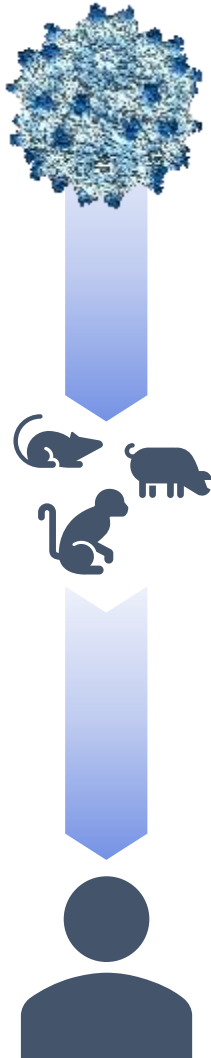
1. Company Overview

2. STRIVE™ Capsid Platform

3. AAV Manufacturing Capabilities

4. Therapeutic Pipeline

Manufacturing Platform: Robust Internal Capabilities to Support Needs from Bench to Clinic



Universal, End-to-End Manufacturing Process

Internalized, standardized, and scalable



Best-in-Class Process Boosted by Strong Internal Know-How

Internally developed materials & methods to optimize process efficiency & product quality



Experienced Scalable Production Supportive of Clinical Needs

>800 production runs executed, proven scalability from 0.2L to 700L scale



Uncompromising Focus on Product Quality

Products consistently meeting superior purity standards



Robust, Comprehensive, & Phase-appropriate Analytical Platform

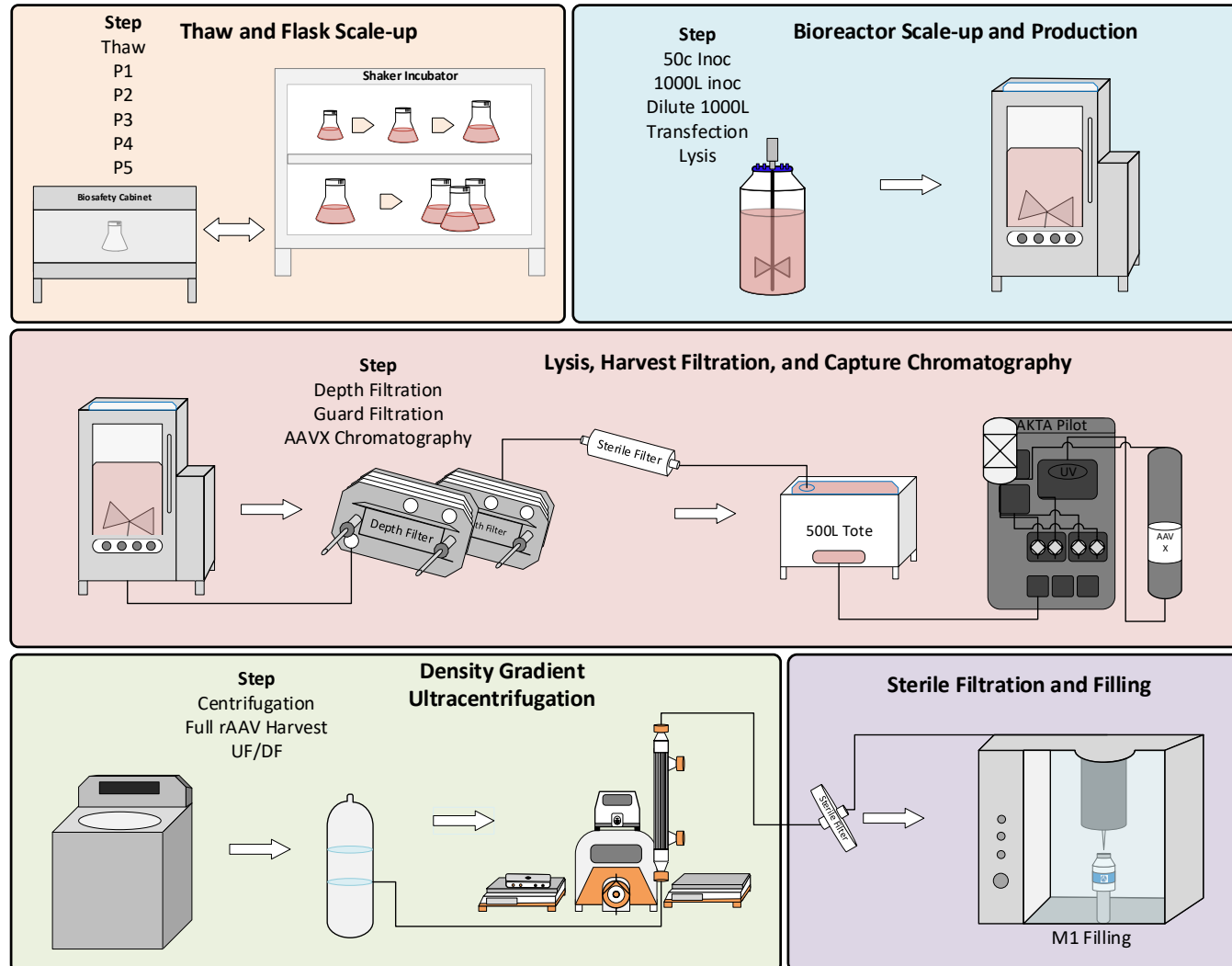
16 assays in-house to support development from discovery to clinic



Gearing Up for Clinical Readiness

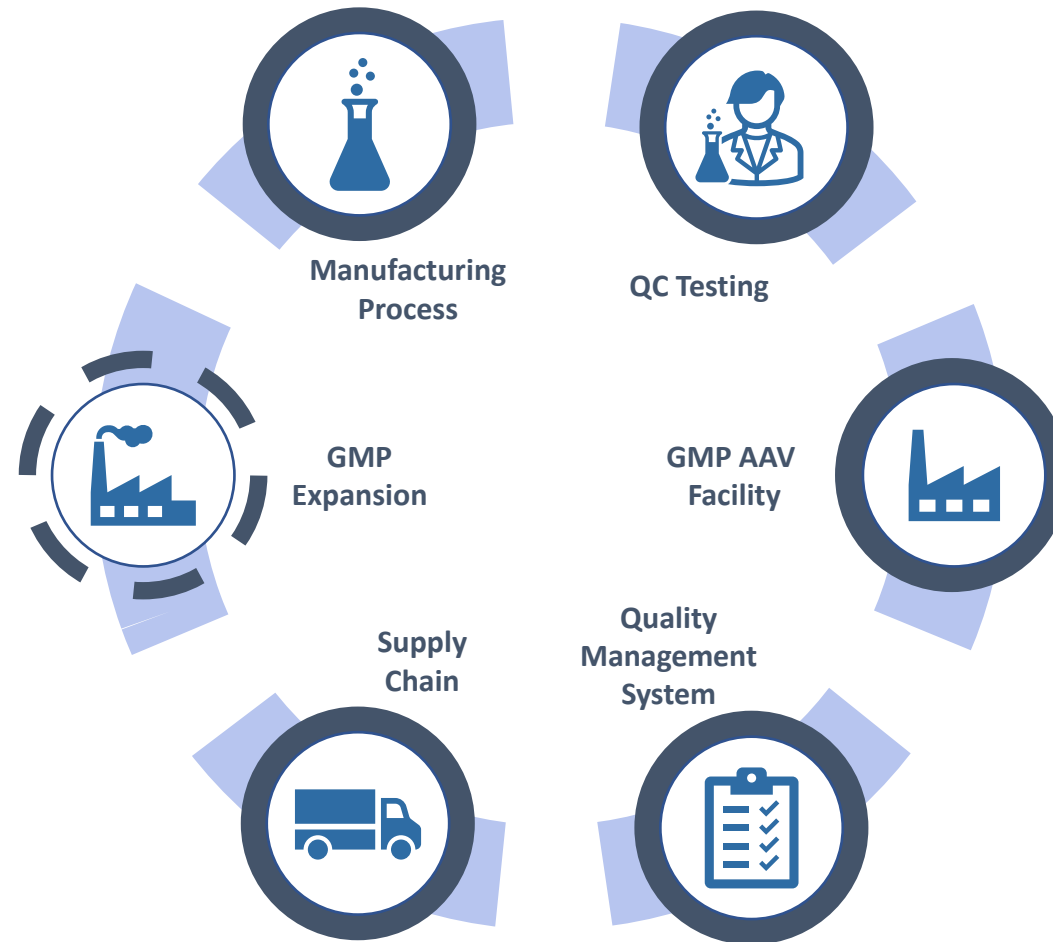
Clinic-ready process, in-house 1000L cGMP facility built-out, seasoned team in place

Best-in-class, Universal, End-to-end Manufacturing Process



- **Internalized:** full ownership & know-how of end-to-end process, no reliance on CDMOs
- **Standardized:** universal baseline process developed for efficient manufacturing of high-purity products with STRV capsids
- **Differentiated:** internally-developed materials & methods to enhance process efficiency & product quality
- **Scalable:** ~800 executed productions from flasks to 700L scale, reproducible yields & recovery
- **Clinic-ready:** GMP-appropriate unit operations, yields supportive of clinical needs

Gearing Up for Clinical Readiness



Agenda

1. Company Overview

2. STRIVE™ Capsid Platform

3. AAV Manufacturing Capabilities

4. Therapeutic Pipeline

Robust Therapeutic Pipeline Enabled by Novel Capsids


StrideBio

		PARTNER	DISCOVERY	PRECLINICAL	EARLY CLINICAL	LATE CLINICAL	
STRX-330	Arrhythmogenic Right Ventricular Cardiomyopathy	 stridebio Wholly owned				Expected to file IND in 2H23	
STRX-340	Hypertrophic Cardiomyopathy	 stridebio Wholly owned				Expected to select candidate in 1H23	

Sarepta

STRX-210	Niemann Pick Disease Type C	 SAREPTA THERAPEUTICS				
STRX-220	Angelman Syndrome	 SAREPTA THERAPEUTICS				
STRX-230	Rett Syndrome	 SAREPTA THERAPEUTICS				
STRX-240	Dravet Syndrome	 SAREPTA THERAPEUTICS				

Takeda

STRX-110	Friedreich's Ataxia					
STRX-120	Undisclosed	